

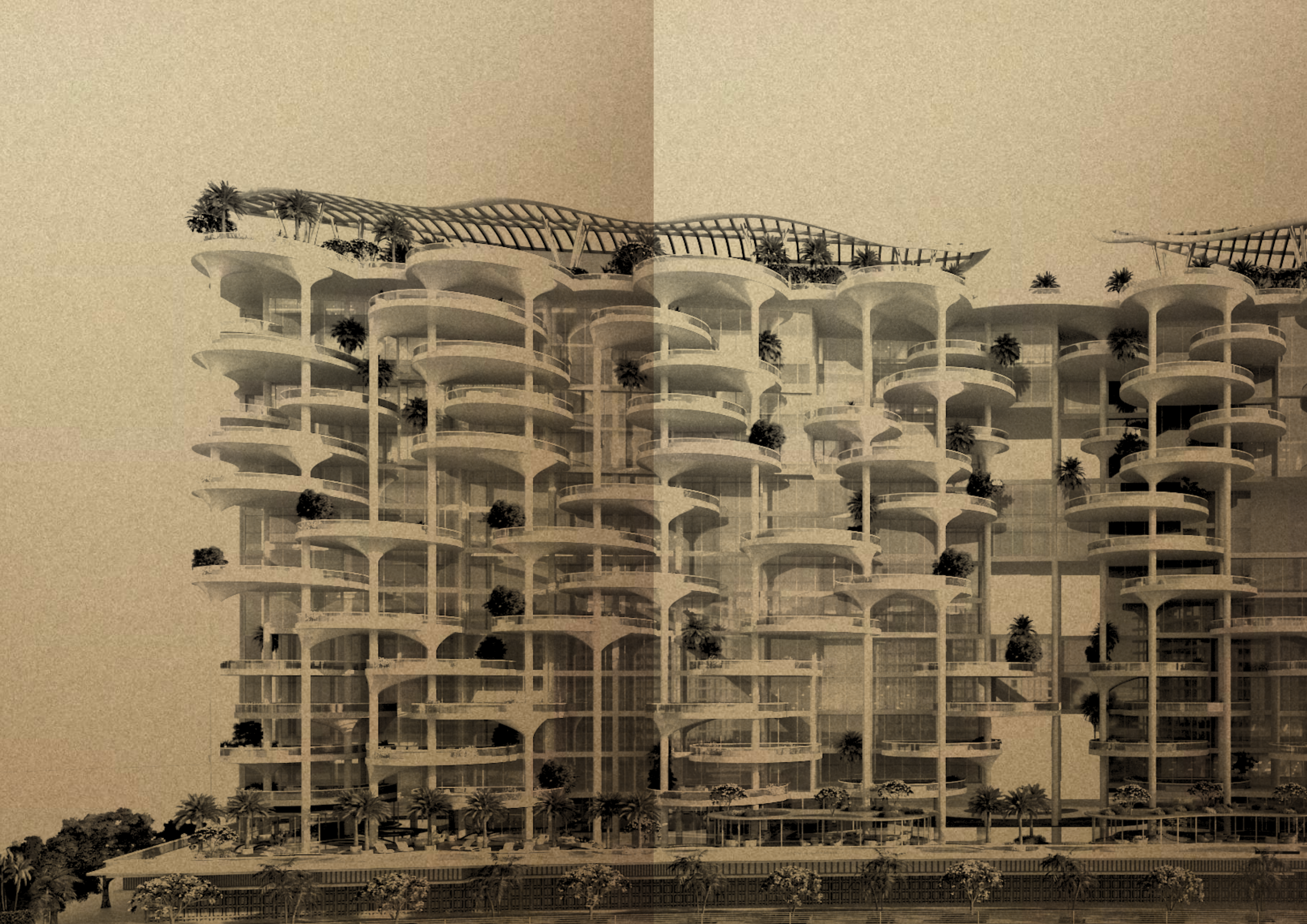
*DAMAC*

\_\_\_\_\_ cavalli \_\_\_\_\_

COOUTURE

LUXURY, UNTAMED.







CAVALLI COUTURE

# LUXURY UNTAMED

AT THE TOP OF EVERY ECOSYSTEM LIVE THOSE WHO FREE THEMSELVES OF LIMITATIONS. THEY INHABIT A WORLD WHERE OPULENCE IS UNLEASHED, AND THE TRAPPINGS OF SOPHISTICATED FIND THEIR WILDEST FORMS OF EXPRESSION. THAT WORLD HAS A NAME. ONE WHICH BLAZES NEW TRAILS THROUGH UNCHARTED TERRITORIES OF REFINEMENT, FLAMBOYANCE AND STYLE. IT IS CALLED CAVALLI COUTURE.







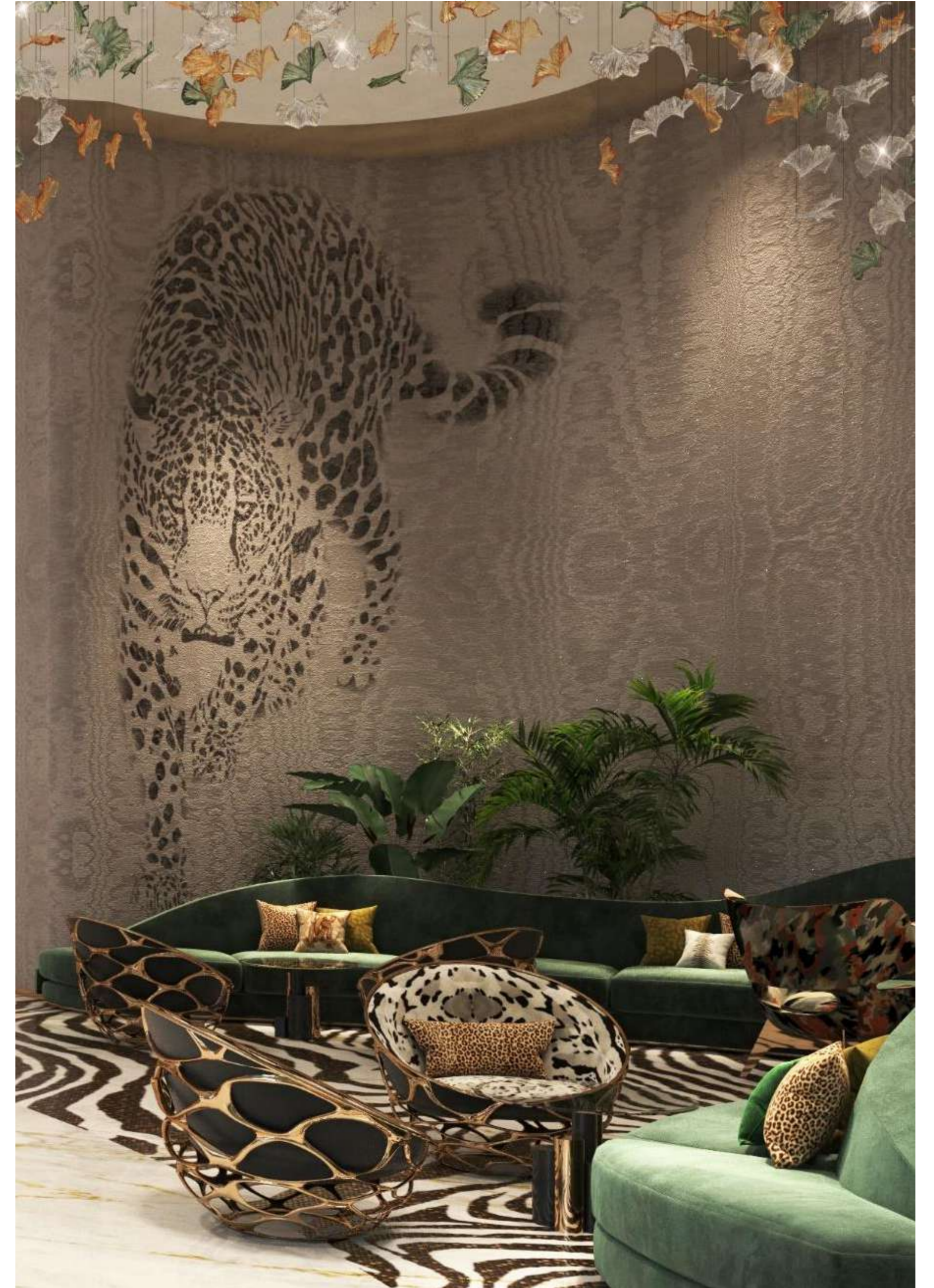


# UNTOUCHED RAINFORESTS

CAVALLI COUTURE IS MORE THAN A PLACE TO LIVE.  
IT IS A WAY OF LIFE, INSPIRED BY ONE OF OUR MOST  
MAJESTIC NATURAL ENVIRONMENTS: AMAZONIA.  
RICH IN GREENERY AND WATER FEATURES,  
THIS LANDMARK GIVES THOSE AT THE APEX OF  
SOCIETY THE OPPORTUNITY TO EXPERIENCE THE  
WONDERS OF THE RAINFOREST, RIGHT HERE IN DUBAI.









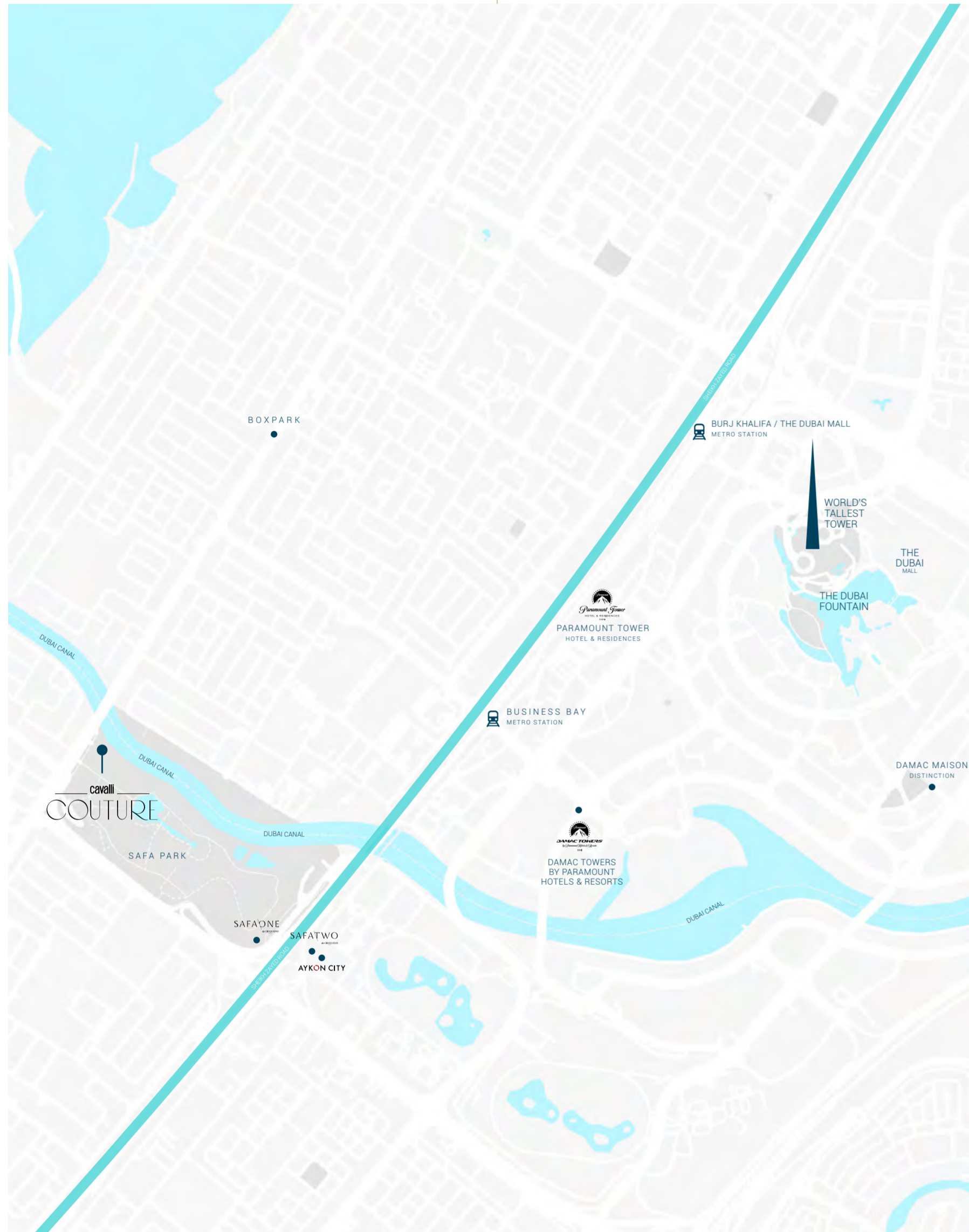
# UNEQUALLED LOCATION

CAVALLI COUTURE STANDS IN THE HEART OF BUSINESS BAY, WHERE DOWNTOWN, SAFA PARK AND THE ICONIC CANAL MEET. A FEW MINUTES FROM BURJ KHALIFA, DUBAI MALL AND DUBAI INTERNATIONAL FINANCIAL CENTRE, AND A MERE 15 MINUTES DRIVE FROM DUBAI INTERNATIONAL AIRPORT, THE BUILDING IS STRATEGICALLY LOCATED TO GIVE YOU ACCESS TO GREEN FIELDS, WATERWAYS, AND THE HUSTLE AND BUSTLE OF THE CITY'S' MAIN BUSINESS, LEISURE AND ENTERTAINMENT DISTRICTS.

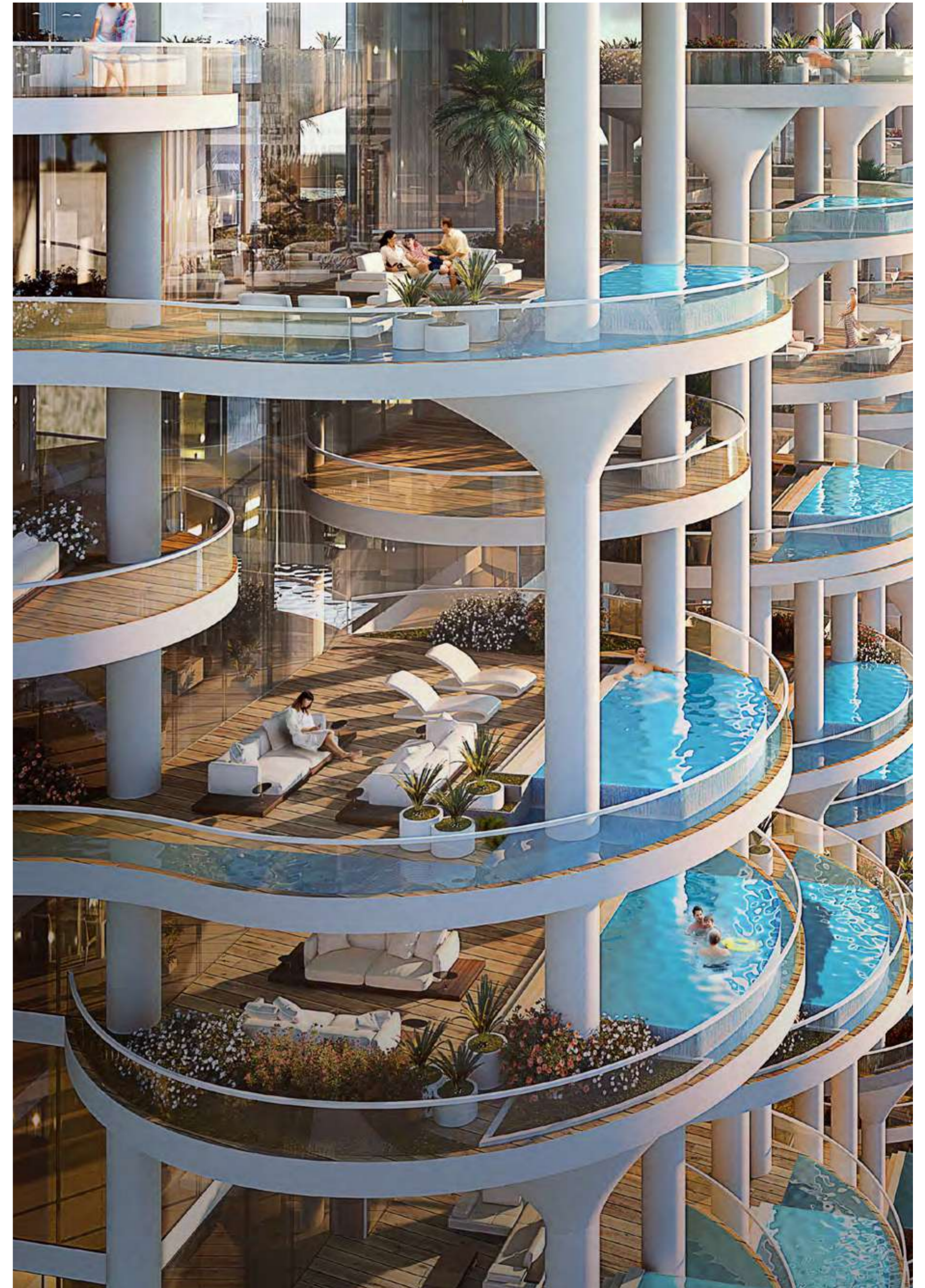




# CAVALLI COUTURE



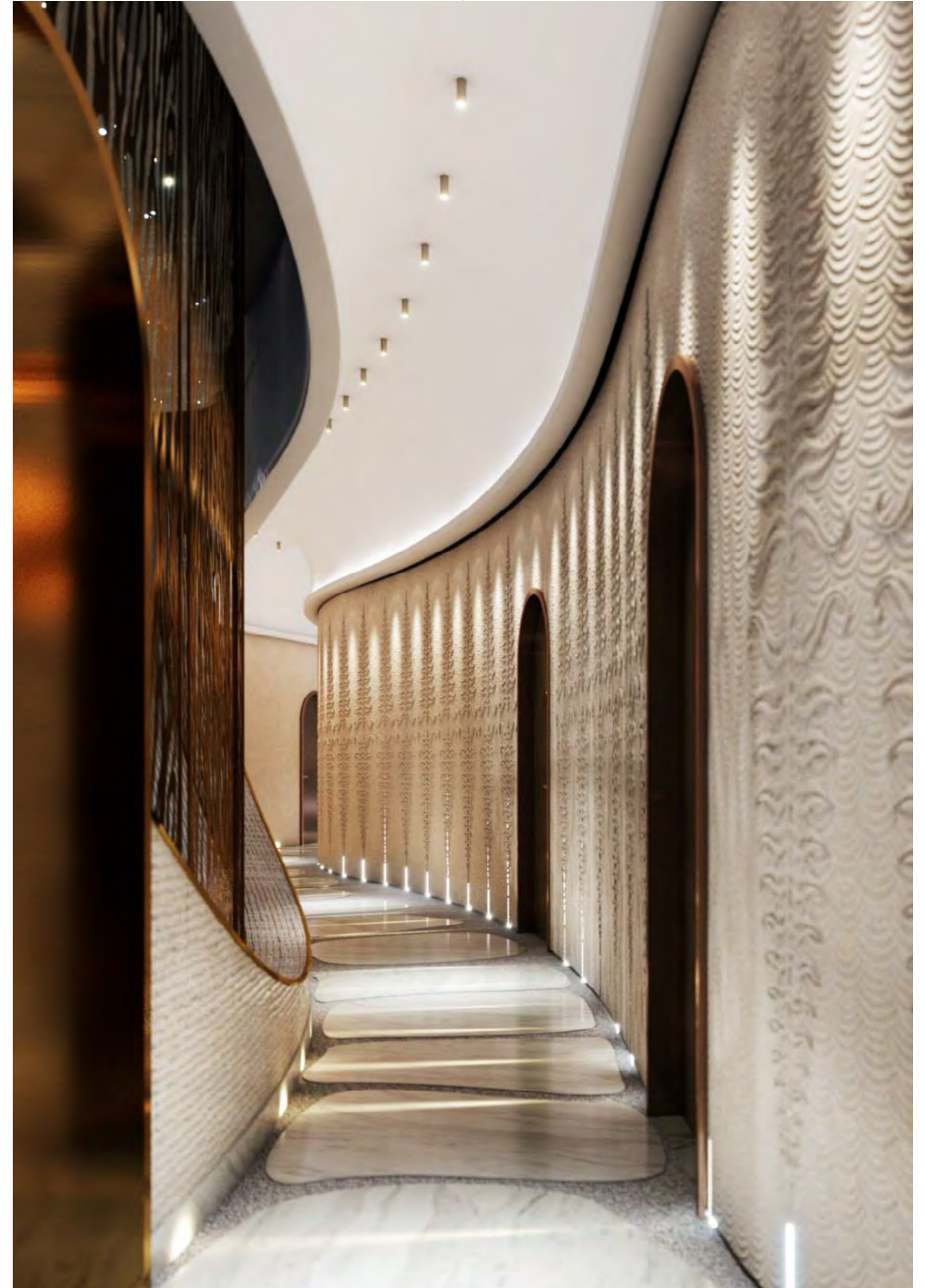
























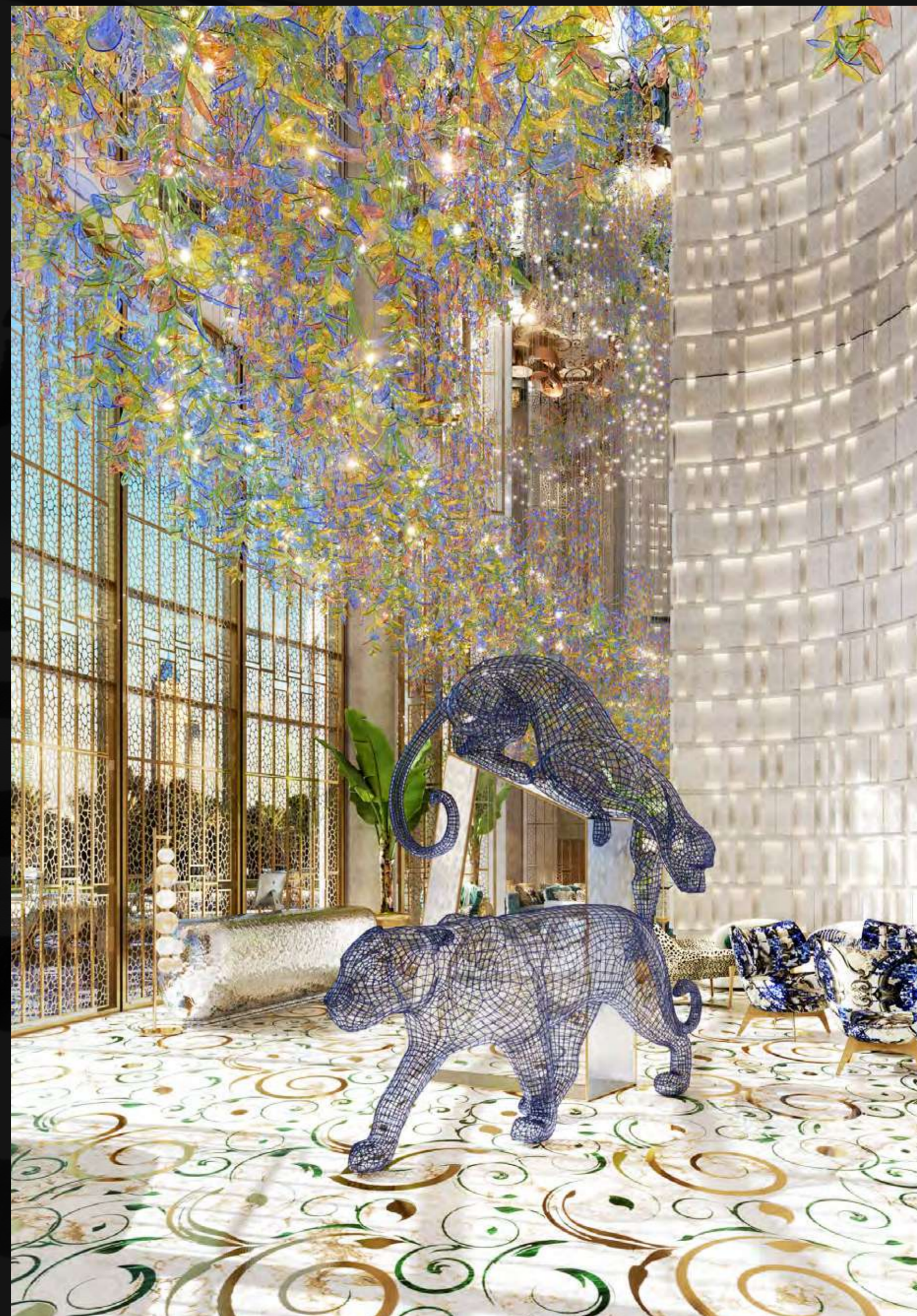
# UNSEEN VIEWS

WHEN IT COMES TO DESCRIBING THE VIEWS FROM CAVALLI COUTURE, BREATHTAKING MIGHT BE AN UNDERSTATEMENT. IN A DUBAI FIRST, THE BUILDING OFFERS PREVIOUSLY UNSEEN PANORAMAS OF SAFA PARK'S TREES, PLANTS AND FLOWER-LINED PATHWAYS FROM ONE SIDE, WHILE THE OTHER PRESENTS YOU WITH A SWEEPING VISTA OF THE DUBAI CANAL, BUSINESS BAY CROSSING AND THE PLACID WATERS OF THE GULF.



# UNENDING WELCOMES

WHEN YOU ENTER CAVALLI COUTURE, YOU ENTER A TRIPLE-HEIGHT LOBBY WHICH NEVER STOPS GREETING YOU. WHETHER IT IS THE VIBRANT CAVALLI-DESIGNED INTERIOR THAT TRANSFORMS THE FOYER INTO A BOLD CELEBRATION OF ANIMAL PATTERNS AND COLOR OR THE UNOBSTRUCTED VIEW OF THE CANAL BEYOND, THE BUILDING MEETS YOU WITH INEXHAUSTIBLE FLAIR, TIME AND TIME AGAIN.











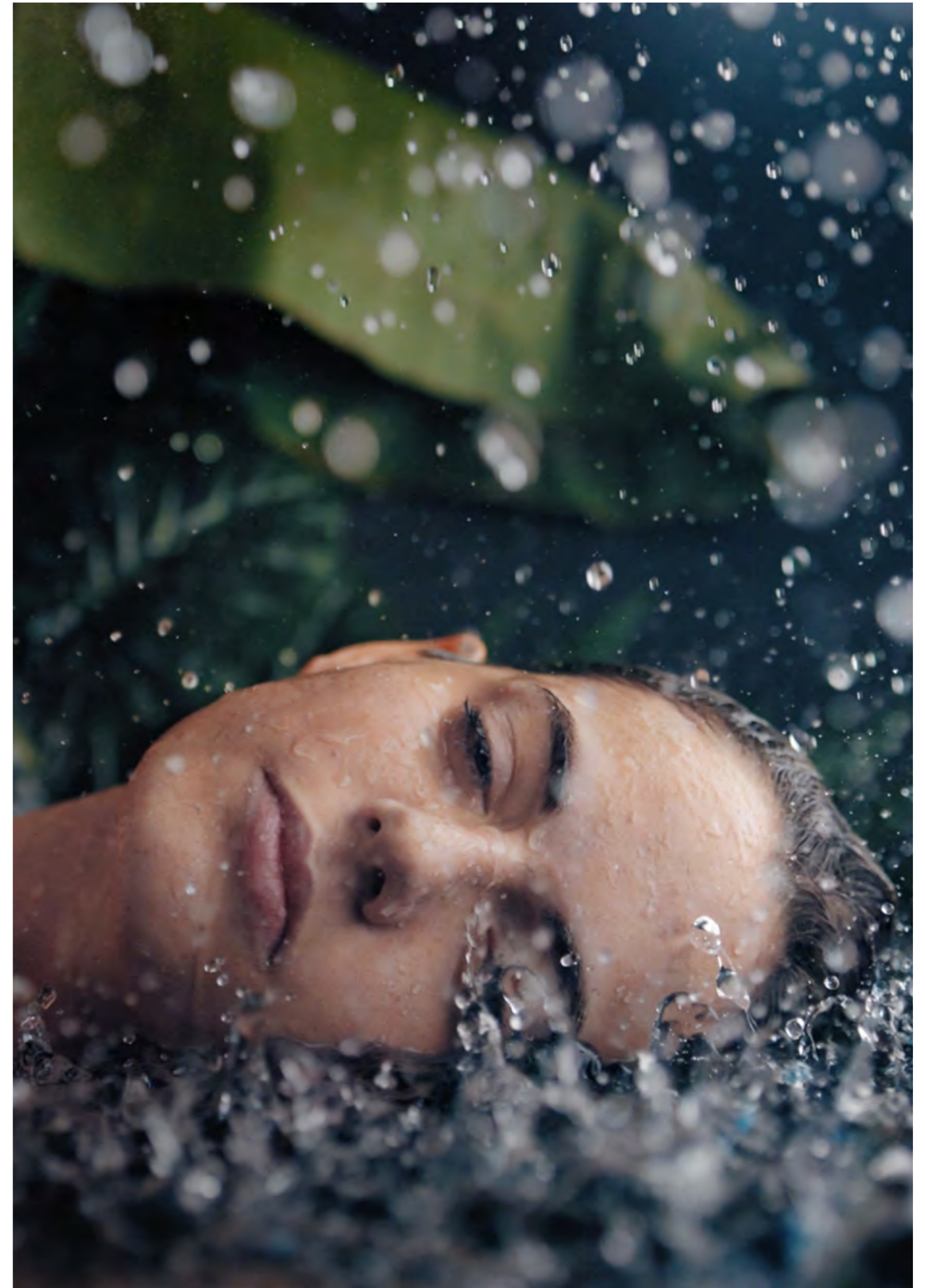
# UNIMAGINABLE SPACE

FROM THE RECEPTION AND PODIUM TO THE TERRACES AND ROOFTOP, CAVALLI COUTURE HAS BEEN DESIGNED TO OPTIMIZE SPACE IN WAYS WHICH REMINDS YOU OF OPENINGS IN A FOREST, WHERE DENSE FOLIAGE GIVES WAY TO SUNLIT GROVES, AND THE CANOPY ABOVE YOUR HEAD PARTS TO REVEAL A CLOUDLESS SKY.



# UNBELIEVABLE LAGOONS

IF YOU THOUGHT LAGOONS WERE ONLY FOUND  
IN THE GREAT OUTDOORS, THINK AGAIN.  
IN AN UNPRECEDENTED ARCHITECTURAL  
TOUR DE FORCE, CAVALLI COUTURE HOUSES ITS  
VERY OWN INDOOR LAGOON. STRETCHING ACROSS  
THE PODIUM, AND ENCIRCLED BY A LAZY RIVER,  
THIS UNIQUE BODY OF WATER INVITES YOU TO  
EXPLORE ITS NETWORK OF WALKWAYS,  
LINKING DIFFERENT LEISURE, WELLNESS  
AND DINING ZONES.





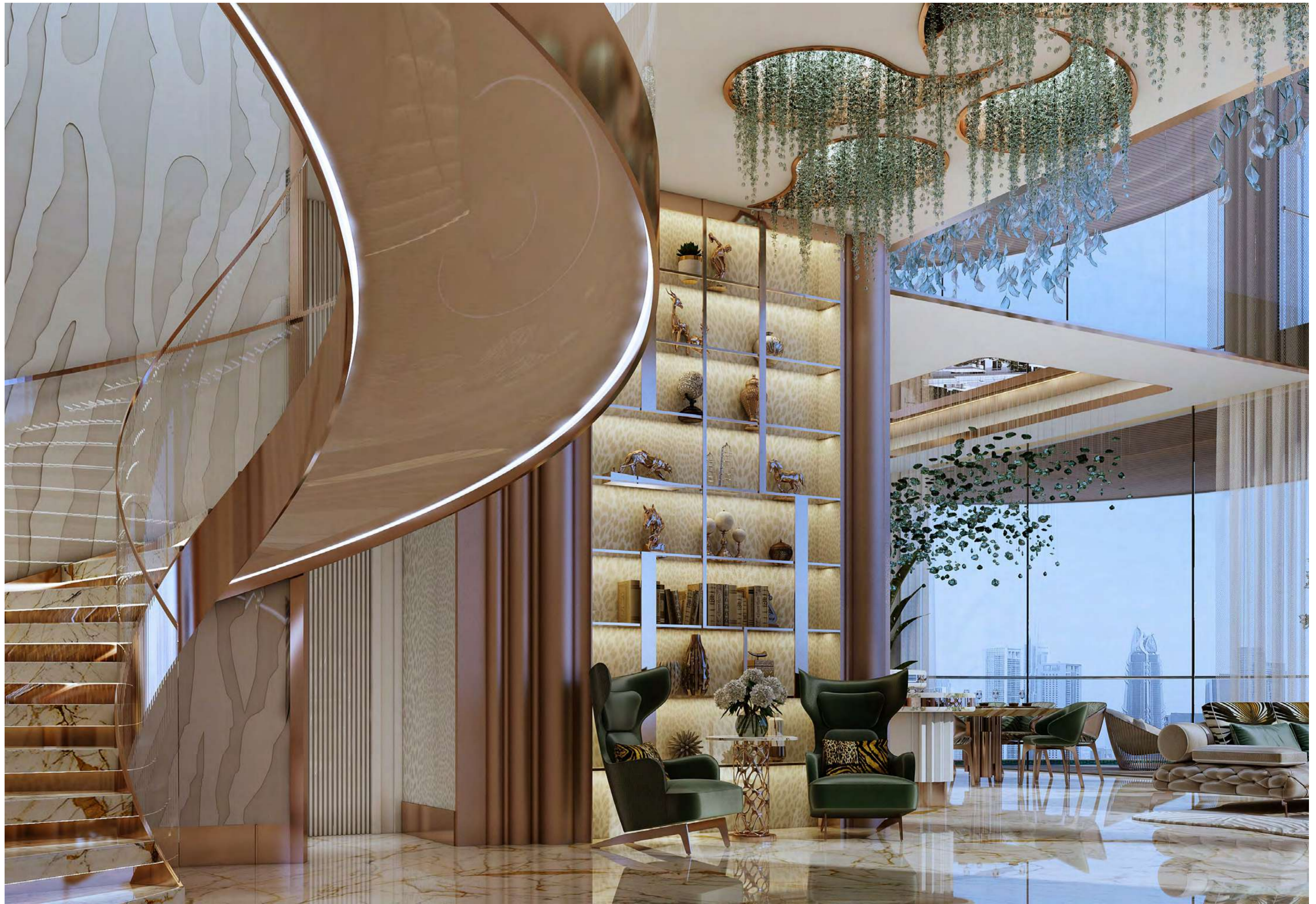


CAVALLI COUTURE

# UNDAUNTED STYLE

ATTITUDE IS FLAUNTED AT CAVALLI COUTURE. WHILE THE TERRACES, POOLS AND FOLIAGE OF THE BUILDING'S EXTERIOR BRING THE JUNGLE TO DUBAI, THE INSIDE OF THE LANDMARK IS EQUALLY FLAMBOYANT, WITH WORLD-RENOWN FASHION BRAND CAVALLI DESIGNING EVERY ASPECT OF THE INTERIOR. HERE, THE WALLS AND UPHOLSTERY ARE ADORNED WITH SIGNATURE ANIMAL PRINTS AND NATURAL MOTIFS THAT SWAGGER WITH CONFIDENCE.

















ESPRESSO		ESPRESSO	
ESPRESSO	2.00 2.40	AMERICANO	2.80 3.80
MACCHIATO	1.80 2.50	CAPPUCINO	2.00 2.80
CAFFÈ MISTO	2.20	ESPRESSO	2.40
GRAN LATTE	1.40	LATTE	3.30
GRAN MASHI	1.20	FLAT WHITE	3.80
GRAN SHOT	3.50	MILCHKAFFEE	3.80
ESPRESSO	3.00	ESPRESSO	3.90
HOT CHOCOLATE	3.00		

COSE







*Old*  
**CAVALLI**









# UNDISCOVERED ISLANDS

THE LAGOONS WHICH GRACE THE PODIUM LEVEL  
ARE HOME TO AN ARCHIPELAGO OF ISLANDS,  
EACH OFFERING A DISTINCT EXPERIENCE.

VISIT THE FIRST TO WORK OUT AT OUR  
FULLY-EQUIPPED GYM, THE SECOND TO PAMPER  
YOURSELF AT THE LUXURY SPA, WHERE YOU CAN  
ALSO ENJOY AN EXFOLIATING FISH PEDICURE,  
AND THE THIRD TO SAMPLE A MOUTHWATERING  
RANGE OF FINE DINING OPTIONS.









CAVALLI COUTURE





# UNLIMITED HOMES

ALL UNITS AT CAVALLI COUTURE ARE SUPER LUXURY, AND DISTINGUISHED BY THE HIGHEST STANDARDS OF QUALITY AND CRAFTSMANSHIP. THE BUILDING BOAST FROM 3 TO 5 BEDROOM RESIDENCES AS WELL AS 6 BEDROOM ULTRA LUXURY PENTHOUSES. EACH OF ITS HOMES LAYS CLAIM TO A TERRACE WITH PERSONAL POOL AND UNBROKEN VIEWS OF THE DUBAI CANAL, PLUS ACCESS TO THE ROOFTOP INFINITY POOL AND RECREATION ZONE, WHERE THE FINER THINGS IN LIFE CAN BE APPRECIATED, FROM SUNRISE TO SUNSET.





# UNMATCHED SOPHISTICATION

THE PINNACLE OF CAVALLI COUTURE? THE ULTRA LUXURY PENTHOUSES, WHERE THE ULTIMATE LIFESTYLE CAN BE LIVED. EACH 6 BEDROOM UNIT IS NOT ONLY IMMACULATEDLY DESIGNED AND EXECUTED. THESE HOMES HAVE ACCESS TO THEIR OWN PRIVATE ROOFTOP SWIMMING POOLS TO COMPLEMENT THOSE ON THE TERRACES, AND ENJOY UNPRECEDENTED VIEWS OF BOTH THE DUBAI CANAL ON ONE SIDE, AND THE BOTANICAL DELIGHTS OF SAFA PARK ON THE OTHER.





FLOOR PLANS





5 BEDROOM  
TYPE 1 - UPPER



CAVALLI COUTURE

5 BEDROOM  
TYPE 1 - LOWER



CAVALLI COUTURE



5 BEDROOM  
TYPE 2 - UPPER

5 BEDROOM  
TYPE 2 - LOWER





5 BEDROOM  
TYPE 3 - UPPER



CAVALLI COUTURE

5 BEDROOM  
TYPE 3 - LOWER



CAVALLI COUTURE



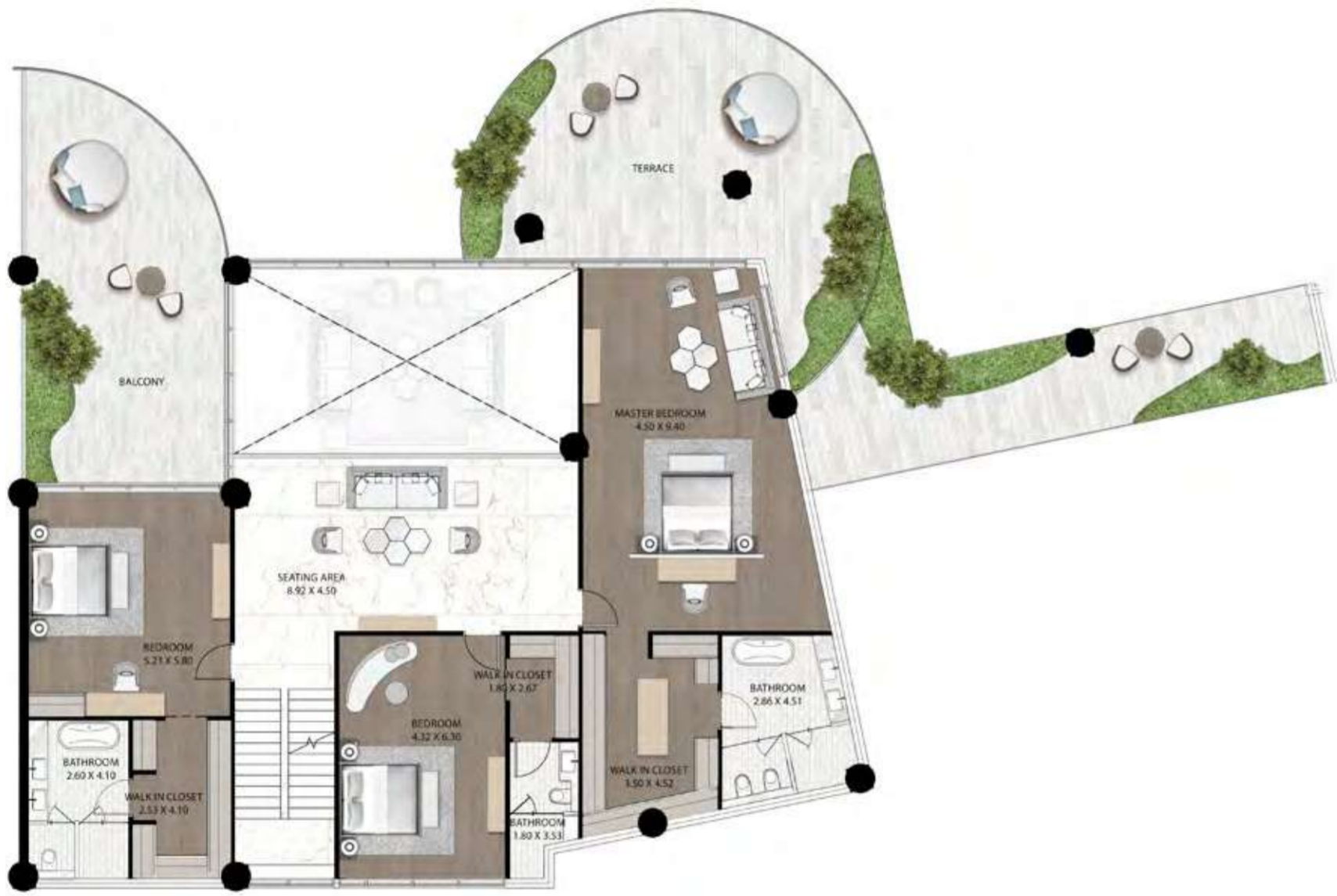
5 BEDROOM  
TYPE 4 - UPPER

5 BEDROOM  
TYPE 4 - LOWER





5 BEDROOM  
TYPE 5 - LEVEL 14



CAVALLI COUTURE

5 BEDROOM  
TYPE 5 - LEVEL 13



CAVALLI COUTURE



4 BEDROOM  
TYPE 1A



CAVALLI COUTURE

4 BEDROOM  
TYPE 1B



CAVALLI COUTURE



4 BEDROOM  
TYPE 2A



4 BEDROOM  
TYPE 2B





4 BEDROOM  
TYPE 3A



CAVALLI COUTURE

4 BEDROOM  
TYPE 3B



CAVALLI COUTURE



4 BEDROOM  
TYPE 4A



CAVALLI COUTURE

4 BEDROOM  
TYPE 4B



CAVALLI COUTURE



4 BEDROOM  
TYPE 5A



CAVALLI COUTURE

4 BEDROOM  
TYPE 5B



CAVALLI COUTURE



3 BEDROOM  
TYPE 1A



CAVALLI COUTURE

3 BEDROOM  
TYPE 1B



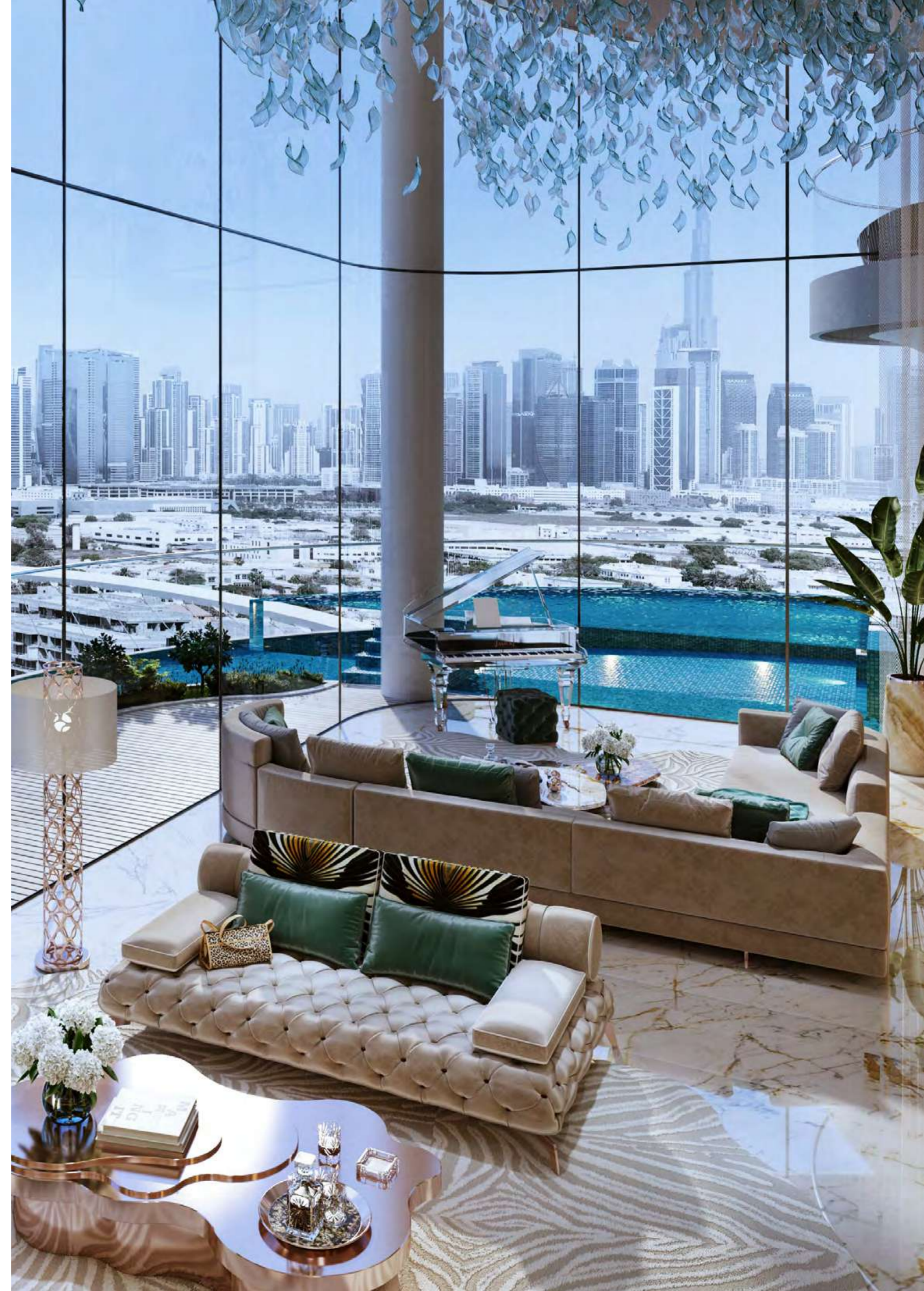
CAVALLI COUTURE



# 3 BEDROOM TYPE 2



CAVALLI COUTURE





# 3 BEDROOM TYPE 3A



CAVALLI COUTURE

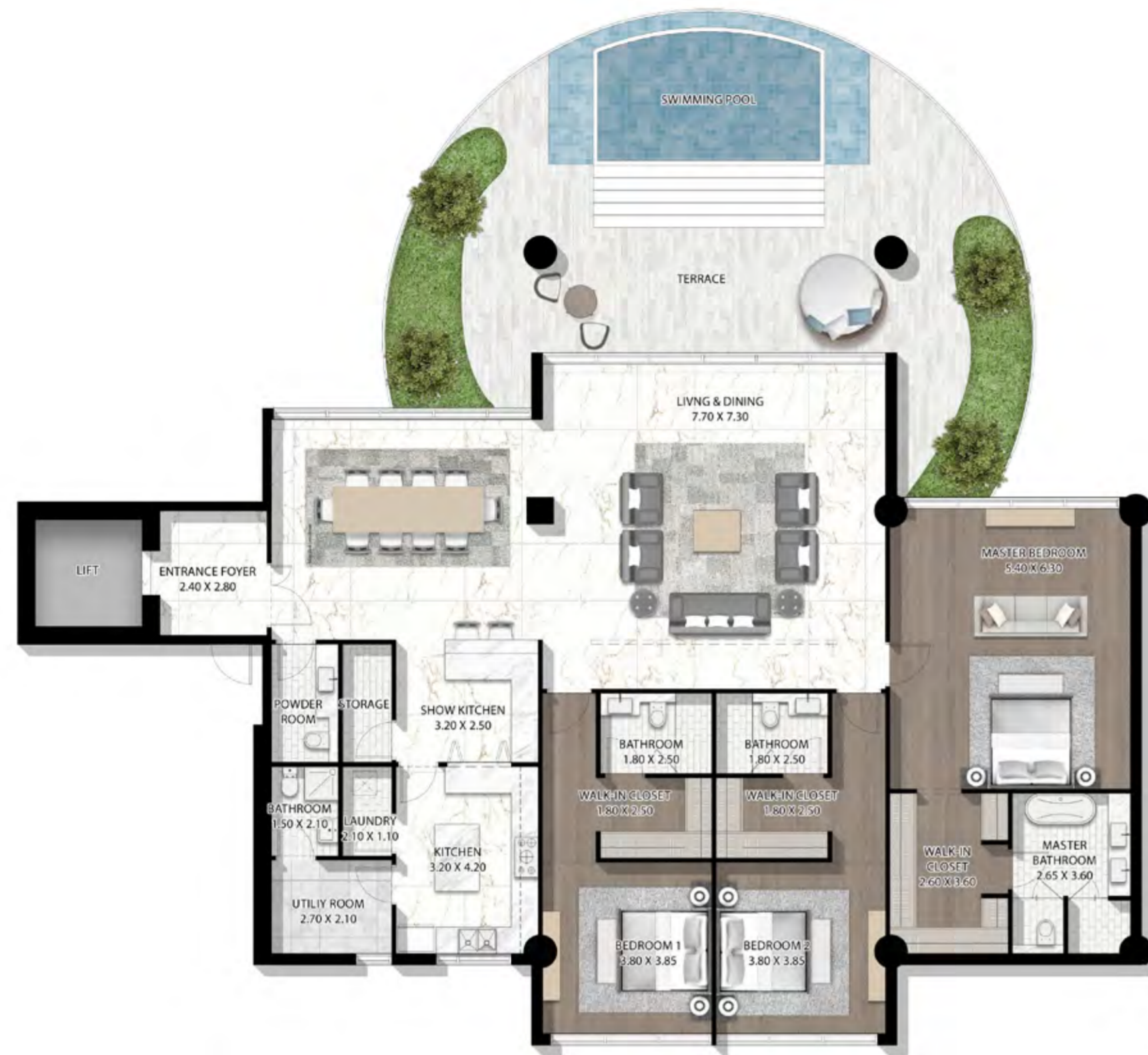
# 3 BEDROOM TYPE 3B



CAVALLI COUTURE



# 3 BEDROOM TYPE 4A



CAVALLI COUTURE

# 3 BEDROOM TYPE 4B



CAVALLI COUTURE



3 BEDROOM  
TYPE 5A



CAVALLI COUTURE

3 BEDROOM  
TYPE 5B



CAVALLI COUTURE





**TANAMI**  
P R O P E R T I E S

**CONTACT US**

+971 4 248 3400 | +971 55 162 3236

**Email Us**

info@tanamiproperties.ae

For More Info...

[www.tanamiproperties.com/Projects/Damac-Cavalli-Couture](http://www.tanamiproperties.com/Projects/Damac-Cavalli-Couture)



**ADDRESS**

Office 3405, Marina Plaza,  
Al Marsa Street, Dubai Marina, UAE





***DAMAC***