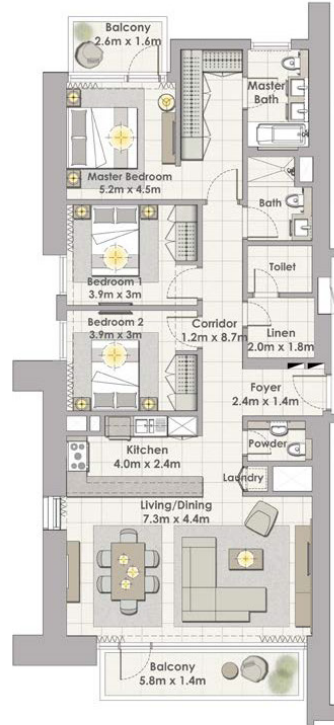


DUBAI CREEK

HARBOUR

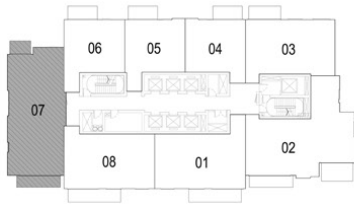
CREEK HORIZON



TOWER 2

3 BEDROOM W/ BALCONY

UNIT 07/ LEVEL 2-17



Suite Area 1467 Sq.ft. / 136.30 Sq.m.

Balcony Area 162 Sq.ft. / 15.01 Sq.m.

Total Area 1629 Sq.ft. / 151.31 Sq.m.



1. All dimensions are in Imperial and metric, and measured to structural elements and exclude wall finishes and construction tolerances. 2. All materials, dimensions, and drawings are approximate only. 3. Information is subject to change without notice, at developer's absolute discretion. 4. Actual area may vary from the stated area. 5. Drawings not to scale. 6. All images used are for illustrative purposes only and do not represent the actual size, features, specifications, fittings, and furnishings. 7. The developer reserves the right to make revisions/alterations, at its absolute discretion, without any liability whatsoever.

DUBAI CREEK

HARBOUR

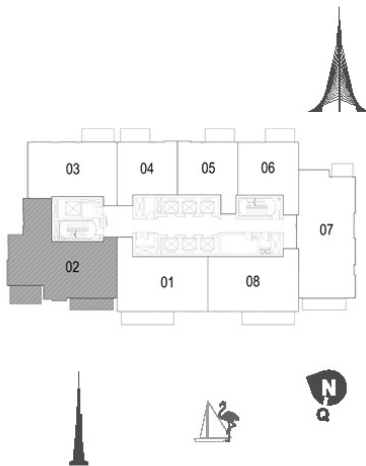
CREEK HORIZON



TOWER 1

3 BEDROOM W/ BALCONY

UNIT 02/ LEVEL 2-17



Suite Area 1515 Sq.ft. / 140.72 Sq.m.

Balcony Area 180 Sq.ft. / 16.75 Sq.m.

Total Area 1695 Sq.ft. / 157.47 Sq.m.

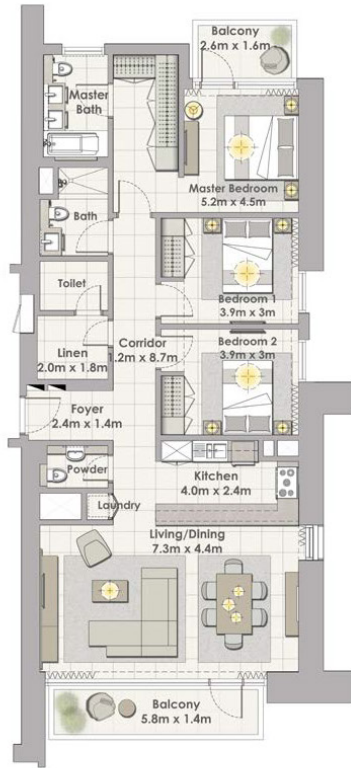


1. All dimensions are in Imperial and metric, and measured to structural elements and exclude wall finishes and construction tolerances. 2. All materials, dimensions, and drawings are approximate only. 3. Information is subject to change without notice, at developer's absolute discretion. 4. Actual area may vary from the stated area. 5. Drawings not to scale. 6. All images used are for illustrative purposes only and do not represent the actual size, features, specifications, fittings, and furnishings. 7. The developer reserves the right to make revisions/alterations, at its absolute discretion, without any liability whatsoever.

DUBAI CREEK

HARBOUR

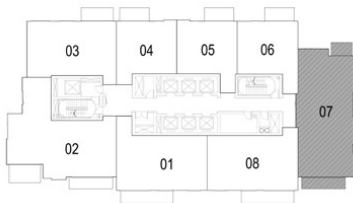
CREEK HORIZON



TOWER 1

3 BEDROOM W/ BALCONY

UNIT 07/ LEVEL 2-17



Suite Area 1465 Sq.ft. / 136.13 Sq.m.

Balcony Area 162 Sq.ft. / 15.09 Sq.m.

Total Area 1627 Sq.ft. / 151.22 Sq.m.

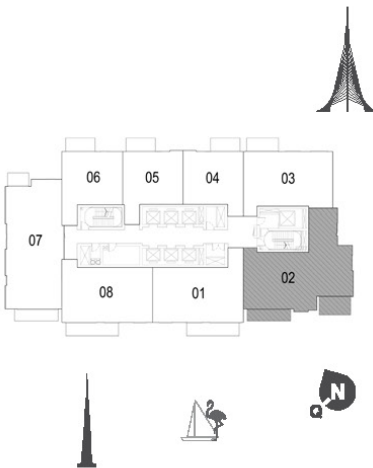


1. All dimensions are in Imperial and metric, and measured to structural elements and exclude wall finishes and construction tolerances. 2. All materials, dimensions, and drawings are approximate only. 3. Information is subject to change without notice, at developer's absolute discretion. 4. Actual area may vary from the stated area. 5. Drawings not to scale. 6. All images used are for illustrative purposes only and do not represent the actual size, features, specifications, fittings, and furnishings. 7. The developer reserves the right to make revisions/alterations, at its absolute discretion, without any liability whatsoever.

DUBAI CREEK

HARBOUR

CREEK HORIZON



TOWER 2

3 BEDROOM W/ BALCONY

UNIT 02/ LEVEL 2-17

Suite Area	1515 Sq.ft. / 140.77 Sq.m.
Balcony Area	180 Sq.ft. / 16.71 Sq.m.
Total Area	1695 Sq.ft. / 157.48 Sq.m.



1. All dimensions are in Imperial and metric, and measured to structural elements and exclude wall finishes and construction tolerances. 2. All materials, dimensions, and drawings are approximate only. 3. Information is subject to change without notice, at developer's absolute discretion. 4. Actual area may vary from the stated area. 5. Drawings not to scale. 6. All images used are for illustrative purposes only and do not represent the actual size, features, specifications, fittings, and furnishings. 7. The developer reserves the right to make revisions/alterations, at its absolute discretion, without any liability whatsoever.